

Welcome to the Ninth Annual Hawaii International Conference on Social Sciences

Aloha!

We welcome you to the Ninth Annual Hawaii International Conference on Social Sciences. This event offers a rare opportunity for academics and other professionals from around the world to share their broad array of perspectives. True to its primary goal, this conference provides those with cross-disciplinary interests related to social sciences to meet and interact with others inside and outside their own discipline.

The international attendees to this conference bring a variety of viewpoints shaped by different cultures, languages, geography and politics. This diversity is also captured in the Hawaii International Conference's unique cross-disciplinary approach. The resulting interaction energizes research as well as vocation.

With Waikiki Beach, Diamond Head and the vast South Pacific as the backdrop, this venue is an important dimension of this conference. For centuries a stopping place of explorers, Hawaii has historically been enriched by the blend of ideas that have crossed our shores. The Hawaii International Conference on Social Sciences continues this tradition in the nurturing spirit of Aloha. Along with its ideal weather and striking beauty, the Hawaiian Islands provide natural elements to inspire learning and dialogue.

The 2009 conference was a great success. We hosted more than 200 participants representing more than 15 countries. Thank you for joining the 2010 Hawaii International Conference on Social Sciences!

The 2011 Hawaii International Conference on Social Sciences will be held June 1 – 4, 2011 at the Hilton Waikiki Prince Kuhio Hotel in Honolulu, Hawaii. Please check our website in early July for more details!

<http://www.hicsocial.org>

E-mail: social@hicsocial.org

The **Proceedings Publication** can be found on the CD ROM (ISSN #1539-7300).

Registration Hours

June 1, 2010 (Tuesday)	4:00pm - 8:00pm
June 2, 2010 (Wednesday)	7:00am - 4:30pm
June 3, 2010 (Thursday)	7:00am - 4:30pm
June 4, 2010 (Friday)	7:00am - 2:30pm
June 5, 2010 (Saturday)	7:00am - 2:30pm

(Registration Desk is in **the Hawaii I and Hawaii II rooms**,
2nd Floor of the Hilton Waikiki Prince Kuhio Hotel)

Concurrent Session Times

8:00 – 9:30 AM; 9:40 – 11:10 AM; 11:20 AM – 12:50 PM; 1:00 – 2:30 PM; 2:40 – 4:10 PM

Session Chairs are asked to:

- Introduce the participants.
- Start and end the sessions on time.
- Lead discussions. It is up to the Session Chair if questions and answers will come after each paper or if questions and answers will come after all of the papers of the session are through presenting.

All participants of each of the sessions should feel free to consider themselves as discussants.

Poster Sessions

All poster sessions will be held in the Queen Liliuokalani Ballroom. Presenters will be able to meet one-on-one with interested participants for detailed discussions regarding their research. Tri-fold presentation boards, easels with flipcharts, and tables will be provided in the room for the presenters.

Internet Access

Limited Internet access will be provided in the registration room for participants to check their email. There will be a small number of laptops provided by the conference for Internet use. Please limit use of these computers to 15 minutes.

If you have your own laptop with wireless Internet capabilities, you will be able to pick up our wireless signal in and around the registration room. The wireless Internet SSID is **“HIC”**.

Please note that **Internet access is NOT provided** in any of the presentation rooms.

Breakfasts - Four breakfasts are included with registration:

(Conference Badge is required for Breakfasts)

6/2/2010	Wednesday	7:00 AM – 9:00 AM	Queen Liliuokalani Ballroom
6/3/2010	Thursday	7:00 AM – 9:00 AM	Queen Liliuokalani Ballroom
6/4/2010	Friday	7:00 AM – 9:00 AM	Queen Liliuokalani Ballroom
6/5/2010	Saturday	7:00 AM – 9:00 AM	Queen Liliuokalani Ballroom

Additional breakfast coupons are available for \$25 per day at the registration desk.

Coffee/Snack Breaks

Wednesday – Saturday 9:30 AM and 12:30 PM

(Coffee/Snack Breaks will be located near the registration room)

Optional Evening Event:

Germaine’s Luau on Saturday, June 5th, 4:30 pm pick up at Hilton Waikiki Prince Kuhio Hotel.

Located on a private beach on the west coast of Oahu, Germaine’s Luau exudes the secret charm of old Hawai’i. Indulge yourself in a multi-course-all-you-can-eat feast of the taste-tempting authentic Hawaiian and American entrees while enjoying refreshing tropical cocktails. Then sit back and enjoy the most spectacular Polynesian Revue in Hawaii. **It should be noted that tickets and refunds are no longer available for Germaine’s Luau.**

Audio/Visual Equipment:

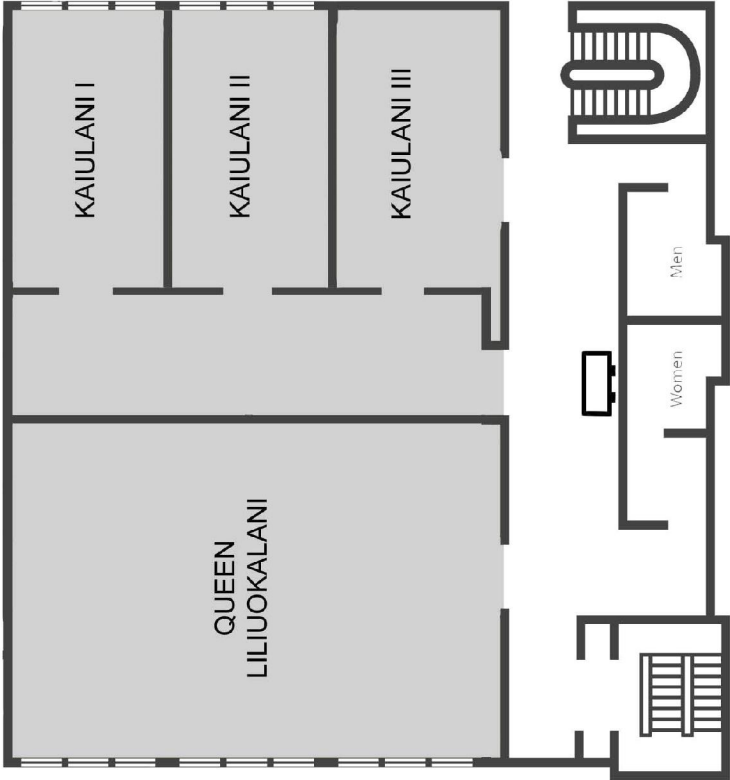
The conference will provide the following in each presentation room (**excluding poster sessions**):

- ✓ Laptop Computer (Please see notes below regarding the laptops)***
- ✓ LCD Data Projector (with screen)
- ✓ VCR/DVD Combination Player (also plays audio CD’s)

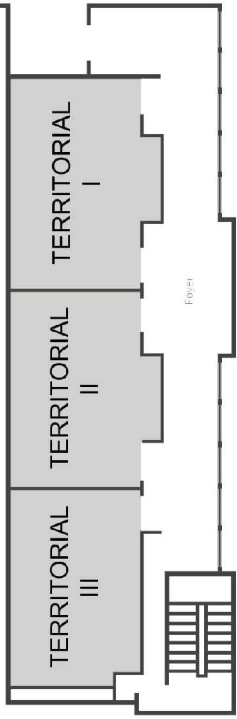
*** The laptops will accept CD-ROMs, DVD’s, and USB “Flash” drives. However, they **ARE NOT** equipped with floppy disk drives. If you have your presentation on a floppy disk, please visit the registration desk and we will transfer the files onto a CD-ROM or USB Flash Drive for you. Microsoft PowerPoint, Word, and Excel are installed on each laptop for your convenience. We will not be able to install any special software that your presentation may require. However, if you brought your own laptop, you may use it instead of the one that is provided. Please note that **Internet access is NOT provided** in any of the presentation rooms.

Hilton Waikiki Prince Kuhio - Floor Plan

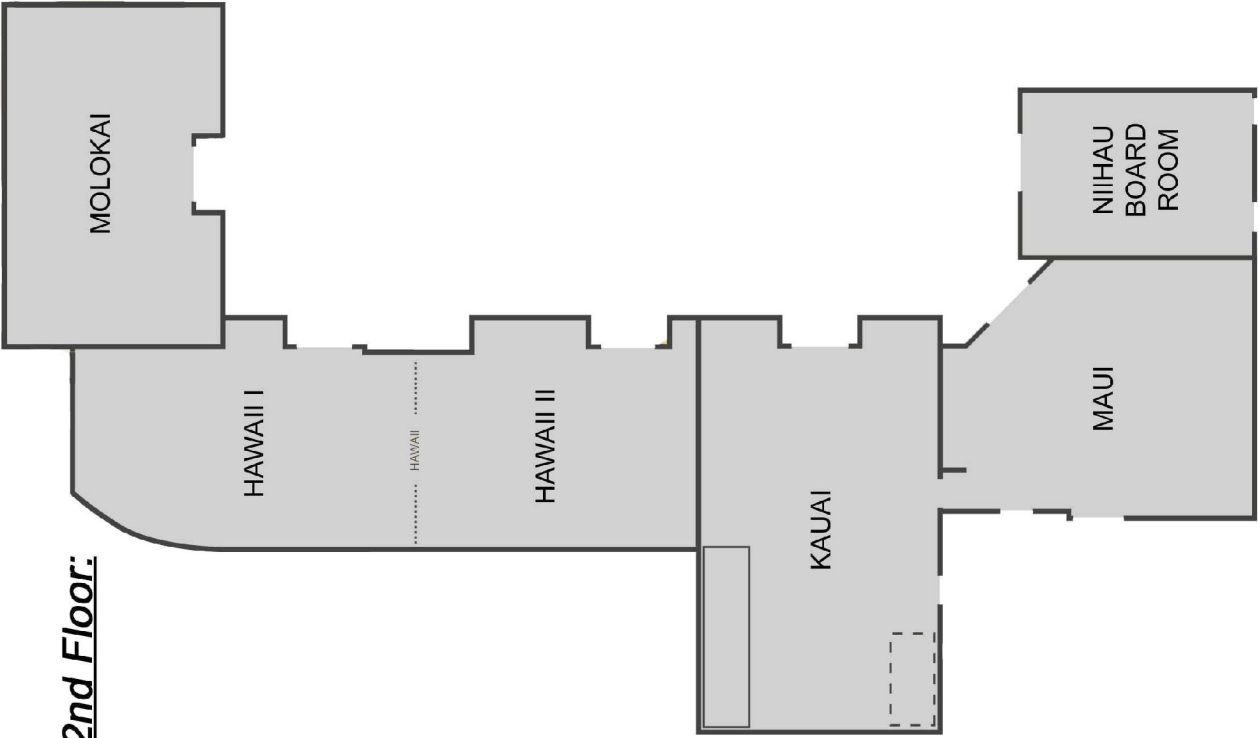
3rd Floor:



4th Floor:



2nd Floor:



Keynote Speaker

Thursday

Time: 11:20 AM – 12:50 PM

6/3/2010

Room: Queen Liliuokalani

Keynote Speaker:

Dr. John I. Gilderbloom

University of Louisville

John I. Gilderbloom is a professor of urban and public affairs in the Graduate Program in Urban and Public Affairs at the University of Louisville, where he also directs the highly lauded Center for Sustainable Urban Neighborhoods (<http://www.louisville.edu/org/sun>). In an international poll of thousands of urbanists, planners and architects, Professor Gilderbloom was ranked as one of the “top 100 urban thinkers in the world.” University of Texas Press on its website, declared Gilderbloom a “legendary figure” in urban affairs. Dr. Gilderbloom has won two “best teacher” awards at two different universities. He consistently gets some of the highest course evaluations among fellow faculty members for his passion, humor and experiential learning pedagogy. Since 1992, his competitive federally funded grants have been over \$3.5 million dollars. He has also brought in from non-federal sources over a million dollars in real and in-kind contributions from private foundations, churches, businesses and local government. Dr. Gilderbloom is working on several multi-million dollar grant proposals both with in and outside the University of Louisville.

Since he earned his Ph.D., Gilderbloom's urban affairs research has appeared in over thirty five peer-reviewed journals, twenty chapters in edited books, eleven monographs and twenty-five opinion pieces in newspapers and magazines. He has written or edited five books. His book *Rethinking Rental Housing*, was declared, "The most significant piece on housing policy written in the last 30 years" by the Journal of the American Planning Association. A survey of college housing courses by the National Housing Institute found *Rethinking Rental Housing* to be one of the most widely chosen books.

In July of 2005 SUNY Press released: *Promise and Betrayal: University and the Creation of Sustainable Urban Neighborhoods* which includes an introduction by former HUD Secretary Henry Cisneros and in the appendix letters of support from President Bill Clinton and Harvard President Derek Bok. His 2008 book, *Invisible City: Poverty, Housing and New Urbanism*, has earned praise from Andres Duany, William Domhoff, Donovan Rypkema, and Neal Pierce. He has published opinion pieces in the Wall Street Journal, Washington Post, Los Angeles Times and USA Today Magazine. In the Clinton administration he worked as a consultant on several items including State of the Union Speech, Section 108 programs, Hope VI, and Community Outreach Partnership Programs. His work has won recognition and honors from U.S. Senate, House of Representatives, President Clinton, Sierra Club, American Planning Association Chapter Award and more recently won outstanding project for Kentucky, Mayor of Houston, Louisville Sierra Club, National Republican Party, a Harvard Innovations in Government semi-finalist, and American Institute for Architects. He is currently working on two new books: *Ideal City: Blueprint for a Sustainable Nation* and *Kentucky's Painted Ladies*.

In 2007, Gilderbloom along with an astronaut and movie star, were declared outstanding Alumnus for Mills High School and at his 20th Annual High School Reunion was named “most successful”, beating out a Princeton Professor, Hollywood screen writer, and a rich drug dealer that supplied drugs for the Grateful Dead. In 2007, Louisville Mayor, Jerry Abramsom named Gilderbloom “Ambassador” for saying nice things about Louisville in his hundreds of lectures around the world and like Elvis Presley was named Kentucky Colonel.

He has been featured in the Sunday New York Times, Planning, Atlanta Journal Constitution and various other international newspapers (Japan, Netherlands, and Cuba). In 2005 Planetizen called Encyclopedia of 20th-Century Architecture one of the 10 best planning and architecture books. Gilderbloom's contribution was a chapter on modern Cuban architecture. Dr. Gilderbloom was a key consultant in helping Telesis invest \$35 million dollars on the 550 unit City View apartments in West Louisville and worked with Louisville Central Development Corporation and area Churches to help design and build 100 affordable housing units in East Russell which is notable for having zero foreclosures in two East Russell census tracts compared to an average of 27 foreclosures in other black neighborhoods and the price increase of houses in these neighborhoods has been the second highest increase since 2000. More recently completed a five year consultancy in Newport, Kentucky which has resulted in a planned one billion dollar real estate investment. Dr. Gilderbloom has a modest portfolio of historic Victorians homes restored using green principals (<http://www.gilderbloom.org>). He released his DVD which includes his slide show talk on restoring older neighborhoods along with various film clips produced by HUD and his halftime recognition at a UofL basketball game.

In October 2008, he organized and directed the Ideal City Conference: New Perspectives for the 21st Century in Amsterdam, The Netherlands. The conference had 20 papers presented from roughly 5 different countries. In 2009, he will be the guest editor for Sustain: A Journal of Environmental and Sustainability Issues published at the Kentucky Institute for the Environment and Sustainable Development, where some of the papers from the conference, along with papers focusing on the Ideal City and Amsterdam, will appear in Sustain Journal.

Gilderbloom also notes that he once wrote for Rolling Stone Magazine as a teenager, organized with Cesar Chavez in California, backed up Allen Ginsberg and Bing Crosby on flute, studied with beat poet Kenneth Rexroth, in high school had regular Sunday meals with Mother Jones founder Mark Dowie who exposed the deadly Ford Pinto's exploding gas tanks, surfs, skis, and snorkels around the world, once played Elvis for a Dick Clark production in a Nevada nightclub and was fired for being too tall, , sells and trades Cuban abstract art, and is super proud that his Godfather, Dave Lewis, who wrote the movie script. "Klute" which won an Academy award. His personal heroes are his father Murray Gilderbloom and high school math teacher Jaime Escalante who showed that anything is possible to reach your hopes and dreams. .

Dr. Gilderbloom's proudest achievement is raising his son, Max, to be a nice young man currently attends University of Louisville on an array of scholarships—including the highly prized Murray Gilderbloom grandfather award.

The title of the keynote speech is:

A Plan of Action: Why University of Louisville Should Promote Bicycle Culture

Wednesday

Time: 9:40 - 11:10 AM

6/2/2010

Room: Kaiulani I

Session Topic: Psychology

Session Chair: Howland, Robert

Recruitment and Screening Strategies for Bipolar Clinical Trials

Howland, Robert — University of Pittsburgh

The Treatment of Minor Depression with St. John's Wort, Citalopram, or Placebo

Howland, Robert — University of Pittsburgh

A Case Study On Grief Work: An Explosion of Anger For the First Time In 30 Years Since the Death of Her Husband

Kurato, Yukiko — Otemon Gakuin University

Wednesday

Time: 9:40 - 11:10 AM

6/2/2010

Room: Kaiulani II

Session Topic: Sociology

Session Chair: Morgaine, Karen

Defining Americana: How High Profile Political TV Talk Show Hosts Use Patriotism and Fear to Frame Health Care and Immigration Policy Debates

Morgaine, Karen — California State University, Northridge

McDonald, Lauren — California State University, Northridge

Chomsky, Wittgenstein and Bourdieu: Toward a Cognitive Sociology

Kennedy, Devereaux — Grand Valley State University

Spatial Access to Local Public Parks and Neighborhood Socio-Demographic Characteristics in The United States: An Ecological Analysis

Wen, Ming — University of Utah

Zhang, Xingyou — Centers for Disease Control and Prevention

Holt, James — Centers for Disease Control and Prevention

Wednesday

Time: 9:40 - 11:10 AM

6/2/2010

Room: Kauai

Session Topic: Education

Session Chair: Martinovic, Marietta

Engaging Students in Deep Learning Through Student led Presentations

Martinovic, Marietta — RMIT University

Study Abroad as Community Service in St. Lucia

Greenberg, Heywood — Lynchburg College

A Comparison of Hong Kong and Singapore on Their Strategies for Developing Regional Education Hubs

Chan, David — City University of Hong Kong

Wednesday

Time: 9:40 - 11:10 AM

6/2/2010

Room: Molokai

Session Topic: Political Science

Session Chair: Kitchin, William

The National Security Letter Regime and the Erosion of the Constitutional Right to Privacy Since 9/11

Kitchin, William — Loyola University Maryland

Presidential Power in Combating Terrorism in a Post 9/11 World. There Seems to be No Content and I am Not Sure Why?

Kessler, Frank P. — Missouri Western State University

Wednesday

Time: 9:40 - 11:10 AM

6/2/2010

Room: Territorial I

Session Topic: Cross-disciplinary areas of Social Sciences

Session Chair: Bibbs, C. Susheel

Lecture-Discussion-Film-Q & A on Vodou - A Heritage of Power

Bibbs, C. Susheel — University of California, Berkeley

Wednesday

Time: 9:40 - 11:10 AM

6/2/2010

Room: Territorial III

Session Topic: Anthropology

Session Chair: Hull, Kerry

Cultural Saliency in the "House of Birds": Ethnoornithological Perspectives on the Tz'utujil Maya of Guatemala

Hull, Kerry — Reitaku University

Fergus, Rob — Audubon Society

Sexualities at Play: "Public" and "Private" Spheres for Thai Women

Tharawan, Kanokwan — Mahidol University

Situational Dominance: Performing Blackness, Asianness and Latinidad in Freestyle Rap Battles

Alim, H. Samy — Stanford University

Alim, H. Samy — Stanford University

Wednesday

Time: 11:20 AM - 12:50 PM

6/2/2010

Room: Kaiulani I

Session Topic: Social Work

Session Chair: Alqashan, Humoud

Attitudes of Kuwaiti Young Adults toward Marriage and Divorce: Comparative Study between Young Adults from Intact and Divorced Families

Alqashan, Humoud — Kuwait University

Attitudes Towards Drugs, and Substance Use among Kuwaiti Students

Alqashan, Humoud — Kuwait University

Future Projections of Substance Abuse in the Elderly: Screening and Treating

Johnson, Jeannette — National Institute on Aging

Wednesday

Time: 11:20 AM - 12:50 PM

6/2/2010

Room: Kaiulani II

Session Topic: Sociology

Session Chair: Li, Lin

Chinese Seafarers' Responses to International Religious Encounters

Li, Lin — Cardiff University

From Plow to Parasail: Exploring the Fate of Traditional Island Agriculture in the Face of 21st Century Tourism.

Mugol, Myracle — University of Guam

Johnson, Kirk — University of Guam

Wednesday

Time: 11:20 AM - 12:50 PM

6/2/2010

Room: Kauai

Session Topic: Geography

Session Chair: Ying, Killian

A Geographic Analysis of Ultraviolet-B and Breast Cancer in the United States

Ying, Killian — California State University, Los Angeles

Lininger, Betty — Glendale Community College

Demko, George — Dartmouth College

Ying, Joan — Southern California Permanente Medical Group

Winner or Losers Adjustment Strategies of Rural-to-Urban Migrants Case Study: Kamza Municipality, Albania

Caro, Erka — University of Groningen

Bailey, Ajay — University of Groningen

van Wissen, Leo — University of Groningen

Wednesday

Time: 11:20 AM - 12:50 PM 6/2/2010 Room: Territorial I
Session Topic: Cross-disciplinary areas of Social Sciences
Session Chair: Kirtley, William

Peril on the High Seas: A Comparison of 18th Century and 21st Century Pirates

Kirtley, William — Central Texas College

Kirtley, Patricia — Independent Scholar

The Impact of a Changing Economy on Education in Argentina: 1990 - 2006

Smith, William — University of Denver

Traditional Diné Governance: An historical test in resiliency

Lerma, Michael — Northern Arizona University

Wednesday

Time: 11:20 AM - 12:50 PM 6/2/2010 Room: Territorial II
Session Topic: International Relations
Session Chair: Goldstein, Martin

President Obama's Foreign Policy

Goldstein, Martin — Widener University

Determining the Role of Government in Development: A Comparative Study between South Korea and Bangladesh

Parnini, Syeda — University of Malaya, Kuala Lumpur

Wednesday

Time: 11:20 AM - 12:50 PM 6/2/2010 Room: Territorial III
Session Topic: Area Studies
Session Chair: Venter, Albert

The Perils of Presidentialism: And Argument Regarding the Election of the South African President

Venter, Albert — University of Johannesburg

Reconstruction of Jewish Cultural Sites and Recovery of Jewish Cultural Assets in Post-Holocaust and Post-Communist Poland and Czech Republic

Sroka, Marek — University of Illinois

Wednesday

Time: 1:00 - 2:30 PM

6/2/2010

Room: Queen Liliuokalani

Poster Session

A Quantitative Analysis of Conversational Proficiency in the Japanese University EFL Classroom

Underwood, Paul — Otsuma Women's University

Myskow, Gordon — Toyo University

Hattori, Takahiko — Otsuma Women's University

Structural Changes of the Malaysian Islamic Bond Market

Nakagawa, Rika — Toyo University

The Effect of E-learning on Nurses' Stress in Operation Room Setting

Shih, Hui-Hsin — Central Taiwan University of Science and Technology

Chiu, Tzu-I — Central Taiwan University of Science and Technology

Theory of Administrative Leadership: The Public Relations Model

Drumm, Morris — Texas Christian University

The Relevance of Job Characteristics and Achievement Motivations for Nurses in the Operating Room of a Middle Taiwan Hospital

Chen, Yi-Chun — Central Taiwan University of Science and Technology

Chung, Shu-Ying — Central Taiwan University of Science and Technology

Advances in Remote Sensing of the Environment for Monitoring Man-modified Landscapes

Jensen, John — University of South Carolina

Hodgson, Michael — University of South Carolina

Yi, Chang — University of South Carolina

Im, Jung-ho — SUNY College of Environmental Science & Forestry

Morgan, Dan — Beaufort County GIS Department

The Research on Self Care of Schizophrenia Patients at Halfway Home

Yu, Wen-Wen — Central Taiwan University of Science and Technology/Taichung Count Psychiatric Rehabilitation Unit

Huang, Hsin Shu — National Changhua University of Education

Chen, Ching-Hai — Ching-Hai Psychiatric Hospital

To Better Health for Taiwanese People-Healthy Community Building Program

Chiu, Tzu-I — Central Taiwan University of Science and Technology

Shih, Hui-Hsin — Central Taiwan University of Science and Technology

Tai Chi Chuan-Promote Quality of Life

Chiu, Tzu-I — Central Taiwan University of Science and Technology

Shih, Hui-Hsin — Central Taiwan University of Science and Technology

Utility of Transaction Cost Theory in Modern Economic Society

Toyama, Masao — Chiba Institute of Technology

On Minimizing the Incidence of Pressure Ulcer in Surgical Patients

Shy, Jiin-Ju — RN BS

Liu, Wen-Miaw — RN PHD

Yau, Ming-Jong — National Chiao Tung University

Protecting Indigenous Knowledge

Lerma, Michael — Northern Arizona University

Wednesday

Time: 2:40 - 4:10 PM
Session Topic: Social Work
Session Chair: Stauss, Kim

6/2/2010

Room: Kaiulani I

A Model for Preventing Teen Pregnancy in a Rural Latino Community

Stauss, Kim — University of Arkansas
Murphy-Erby, Yvette — University of Arkansas
Bivens, Van — University of Arkansas

Taking Lesbian, Gay, and Bisexual Bias Out of the Closet in Social Work Education

Wall, Misty — Boise State University
Rainford, Will — Boise State University

The Audacity of Self-Determination: The Quandary of the Child Welfare Social Worker

Akbar, Ginneh — University of Pennsylvania

Wednesday

Time: 2:40 - 4:10 PM
Session Topic: Sociology
Session Chair: Beaudry, Shannon

6/2/2010

Room: Kaiulani II

Struggling in Suburbia: The Suburban Homeless Family, A Work-in-Progress Report

Beaudry, Shannon — Roosevelt University

No Place to Call Home: A Study of Older Adult Homelessness

DeWees, Mari — FGCU

See Me, Feel Me, Touch Me, Heal Me: Social Support and Healthy Aging among the African American Elderly.

Young, Karen — Clayton State University

Wednesday

Time: 2:40 - 4:10 PM
Session Topic: Education
Session Chair: Lytle, Alan

6/2/2010

Room: Kauai

"Real" Communication Activities Designed Around the IPA

Lytle, Alan — University of Arkansas at Little Rock

Using Blogs to Support Teaching and Learning in Preservice Teacher Education

Szabo, Zsuzsanna — Rensselaer Polytechnic Institute
Schwartz, Jonathan — University of Hawaii at West O'ahu

Targeted Instruction for Teacher Education: Improving Online Discussions by Using Bloom's Taxonomy

Schwartz, Jonathan — University of Hawaii at West O'ahu
Szabo, Zsuzsanna — Rensselaer Polytechnic Institute

Wednesday

Time: 2:40 - 4:10 PM

6/2/2010

Room: Territorial I

Session Topic: Ethnic/International Studies

Session Chair: Bordelon, Thomas

Practicing Cultural Competence with Native Americans: The Social Worker's Role

Bordelon, Thomas — University of Southern Indiana

Chief Plenty Coups' Search for Peace and Cultural Harmony

Bordelon, Thomas — University of Southern Indiana

The Prostitution Debate (Student Paper)

Cherneff, Anya — University of Denver

Wednesday

Time: 2:40 - 4:10 PM

6/2/2010

Room: Territorial II

Session Topic: Economics

Session Chair: Vu, Tam

A Theoretical Justification of the Box-Cox Test in Data Analysis

Vu, Tam — University of Hawaii at Hilo

Economic Growth and the Environment of China

Fang, Xingming — Southwestern University of Finance and Economics

Liu, Tianlun — Southwestern University of Finance and Economics

A Semiparametric Time Trend Varying Coefficients Model: With an Application to Evaluate Credit Rationing in U.S. Credit Market

Hernandez Verme, Paula — Universidad de Guanajuato

Gu, Jingping — University of Arkansas

Wednesday

Time: 2:40 - 4:10 PM

6/2/2010

Room: Territorial III

Session Topic: Other Areas of Social Science

Session Chair: Martinovic, Marietta

Assessment of Outcomes of Home Detention Based Sanctions in the United States

Martinovic, Marietta — RMIT University

Using Innovative Technologies to Teach Social Science Students to Think Statistically (Without the Mathematics)

Howard-Wagner, Deirdre — University of Sydney

Evaluation 'The Transition of High School Students to the University' in the Context of Participant Democracy: In Turkey

Doğanyılmaz, Gozde — Düzce University

İkizoğlu, Musa — Adnan Menderes University

Özsoy, Nesrin — Adnan Menderes University

Çakır, Mesut — Adnan Menderes University

Thursday

Time: 8:00 - 9:30 AM
Session Topic: Education
Session Chair: Miller, Frank

6/3/2010

Room: Kauai

Infusing Multicultural Perspectives into the Elementary School Social Studies Curriculum
Miller, Frank — Pittsburg State University

Thursday

Time: 8:00 - 9:30 AM
Session Topic: Women's Studies
Session Chair: Doma, Crescencio Jr.
Doma, Crescencio Jr. — University of Santo Tomas

6/3/2010

Room: Molokai

The Maternal Services of the Hilots of Sitio Malasa: A Feminist Analysis of the Emerging Challenges To Women's Role in Traditional Health Practice
Lintag, Rhodora Lynn — University of Santo Tomas

Female Circumcision: Cultural Sensitive Intervention
Khaja, Khadija — Indiana University
Boys, Stephanie — Indiana University

Thursday

Time: 8:00 - 9:30 AM
Session Topic: Public Administration
Session Chair: Rangarajan, Nandhini

6/3/2010

Room: Territorial II

Greening Human Resource Practices: An Assessment of Local and State Level Initiatives
Rangarajan, Nandhini — Texas State University
Rahm, Dianne — Texas State University

Potential Cost Savings From Consolidation of Kansas Counties
Wong, John — Wichita State University

Thursday

Time: 9:40 - 11:10 AM 6/3/2010 Room: Kaiulani I
Session Topic: Psychology
Session Chair: ElBassiouny, Amanda

The Implications of the Individual and Social Dimensions of Religious Identity on Stereotyping Outgroups

ElBassiouny, Amanda — Howard University
Van Camp, Debbie — Howard University
Sloan, Lloyd Ren — Howard University

Ethnic Disparities in the Factors Associated with Positive Health Outcome in HIV-infected Adults

Mason, Karen — California State University, Dominguez Hills
Dodson, Chaka — California State University, Dominguez Hills
Maalouf, Haykal — California State University, Dominguez Hills
Kemp, Delashawn — California State University, Dominguez Hills

Thursday

Time: 9:40 - 11:10 AM 6/3/2010 Room: Kaiulani II
Session Topic: Sustainable Development
Session Chair: Kim, Jong Eun

The Impact of Disposable Fashion on Sustainability

Kim, Jong Eun — California State University, Northridge
Woeltz, Joan — Commonwealth Biofuel, LLC

Thursday

Time: 9:40 - 11:10 AM 6/3/2010 Room: Kauai
Session Topic: Education
Session Chair: Gipps, John

Developing a Community of Learners to Enhance Scientific Literacy

Gipps, John — Monash University
Jane, Beverley — Monash University
Fler, Marilyn — Monash University

Learning Science and Mathematics for Teaching: Results from Louisiana's Professional Development Projects

Meynsse, Joseph — Southern University and A&M College
Young, Luria — Southern University and A&M College
Remble, Bobbie — Southern University and A&M College
Griffin, Sheila — Southern University and A&M College

Thursday

Time: 9:40 - 11:10 AM 6/3/2010 Room: Molokai
Session Topic: History
Session Chair: Mondschein, Elissa

The Changing Role of the Gangster in 1930's films: A Comparison of Little Caesar and G-Men

Mondschein, Elissa — San Jose State University

Thursday

Time: 9:40 - 11:10 AM

6/3/2010

Room: Territorial I

Session Topic: Cross-disciplinary areas of Social Sciences

Session Chair: Boys, Stephanie

China's Offer of Reprieve From a Death Sentence: Can America Learn From the Chinese Example?

Boys, Stephanie — Indiana University

Tourism and Crime in European Nations

Tran, Xuan — University of West Florida

Bridges, Stephen — University of West Florida

The Costs of U.S. Drug Prohibition to Law-Abiding Taxpayers

Jackson, Sarah — Indiana University of Pennsylvania

Thursday

Time: 9:40 - 11:10 AM

6/3/2010

Room: Territorial II

Session Topic: Economics

Session Chair: Lynch, Scott

Understanding the Dynamics of Migration and the Role of Immigration in Peripheral Regions

Lynch, Scott — Memorial University

Testing for a Deterministic Trend When There is Evidence of Unit-Root

Gómez, Manuel — Universidad de Guanajuato

Ventosa-Santaularia, Daniel — Universidad de Guanajuato

Further Evidence on Trade Liberalization and Regional Output Convergence in Mexico

Gómez, Manuel — Universidad de Guanajuato

Ventosa-Santaularia, Daniel — Universidad de Guanajuato

Participation of People in Development Programmes; A Study of Employment Guarantee Scheme in Andhra Pradesh

Reddy, Prabhakar — MEPMA, Government of Andhra Pradesh

Thursday

Time: 9:40 - 11:10 AM

6/3/2010

Room: Territorial III

Session Topic: Communication

Session Chair: Wang, Jianglong

Creating Harmony in Relationships: The Art of Positive Interpersonal Communication

Wang, Jianglong — Western Washington University

News Media and their Accountability System: A Study of Thai News Media in the Digital Age

Chantrawatanakul, Sudarat — Bangkok University

Naturally Magical: Understanding How Romantic Frames Violate Romantic Expectations

Propes, Rebecca — Colorado State University

Thursday

Time: 1:00 - 2:30 PM

6/3/2010

Room: Kaiulani I

Session Topic: Social Work

Session Chair: Thomas, Cecilia

Surviving Hurricane Katrina: Exploring Dimensions of Disaster Outcomes

Thomas, Cecilia — University of North Texas

The Dilemma of Disclosure: Partner or Caregiver Perspectives on a Family Member's Imprisonment

Chui, Wing Hong — The University of Hong Kong

Do We Speak the Same Language? Exploring Classroom Management Strategies Used by School Social Workers and Teachers for Students With ADHD in Inner City Schools

Diaz, Mery — University of Pennsylvania

Thursday

Time: 1:00 - 2:30 PM

6/3/2010

Room: Kaiulani II

Session Topic: Sociology

Session Chair: Jacobson, Cardell

White on Black: The Racial Socialization of Transracially Adopted Children

Jacobson, Cardell — Brigham Young University

Smith, Darron T. — University of Utah

Blackness in America in the Obama Era

Corra, Mamadi — East Carolina University

Racial Desegregation in the Prison System

Kurusu, Sheri-Lynn — University of Illinois, Urbana Champaign

Thursday

Time: 1:00 - 2:30 PM

6/3/2010

Room: Kauai

Session Topic: Sustainable Urban Neighborhoods

Session Chair: Donaldson, Shirl

Detroit's Rise to Glory

Donaldson, Shirl — Purdue University

Sundararajan, Raji — Purdue University

Weir, Erin — Purdue University

Translating Evidence into Action: Engagement, Participation and Community Action in an Urban Immigrant Population

Haque, Nasim — Wellesley Institute

Inbetween Place as Fabricating Embodied Networks in Life-Space

Laiprakobsup, Narongpon — Kasetsart University

Back to Black...and Green? Location and Policy Interventions in Contemporary Neighborhood Housing Markets

Hanka, Matthew — University of Louisville

Ambrosius, Joshua — University of Louisville

Gilderbloom, John — University of Louisville

Thursday

Time: 1:00 - 2:30 PM

6/3/2010

Room: Molokai

Session Topic: Political Science

Session Chair: Deen, Rebecca

"It's for the Children:" Intensive Mothering and the School Volunteer

Deen, Rebecca — University of Texas at Arlington

Shelton, Beth Anne — University of Texas at Arlington

Tolerance of Economic Inequality: A Comparative Study

Viotti, Paul — California State University, Chico

Cassar, Alessandra — University of San Francisco

Europe à la Carte? Swiss Convergence towards European Policy Models in Higher and Vocational Education

Bieber, Tonia — University of Bremen

Thursday

Time: 1:00 - 2:30 PM

6/3/2010

Room: Territorial I

Session Topic: Cross-disciplinary areas of Social Sciences

Session Chair: Remble, Bobbie

Interfacing Informal with Formal Science and Mathematics Education in the Classroom

Remble, Bobbie — Southern University and A&M College

Young, Luria — Southern University and A&M College

Meynsse, Joseph — Southern University and A&M College

Griffin, Sheila — Southern University and A&M College

Thursday

Time: 1:00 - 2:30 PM

6/3/2010

Room: Territorial II

Session Topic: International Relations

Session Chair: Aissaoui, Alex

'Quo Vadis' World Politics? - The Case for Historically Minded Research Agenda

Aissaoui, Alex — University of Helsinki

Making the Pipelines Conquerable

Rockwell, Richard — University of Denver

Realist Interpretations of Thucydides and the Melian Dialogue

Rockwell, Richard — University of Denver

Thursday

Time: 1:00 - 2:30 PM

6/3/2010

Room: Territorial III

Session Topic: Communication

Session Chair: Pommer, Sieglinde

Translation as Transcultural Dialogue

Pommer, Sieglinde — University of California, Hastings / Vienna University

Expressing Disagreements Among Malaysians: Words or Silence

Kuang, Ching Hei — University of Malaya

Wong, Ngan Ling — University of Malaya

David, Maya Khemlani — University of Malaya

Thursday

Time: 2:40 - 4:10 PM

6/3/2010

Room: Kaiulani I

Session Topic: Preservation and Green Urbanism

Session Chair: Napier, Ted

Human Dimensions of Soil and Water Conservation: An International Perspective

Napier, Ted — The Ohio State University

Cleland Quibell, Nancy — Socio-Environmental Research

Lowell, MA: Meshing New Urbanism, Sustainable Design, and a National Park

Frank, Marie — University of Massachusetts, Lowell

Neighborhood Revitalization through Land Pooling: A Key to Integrated Community Development in Kathmandu Valley

Nepal, Keshav Raj — Research Consultant

Bagale, Merina — Development Activist

Integrated Development of River Network System for Revitalization of Urban Ecology in Kathmandu Valley, Nepal

Nepal, Keshav Raj — Research Consultant

Bagale, Merina — Development Activist

Thursday

Time: 2:40 - 4:10 PM

6/3/2010

Room: Kaiulani II

Session Topic: Sociology

Session Chair: Lee, Albert

Korean American Parachute Kids: Parental Influence & Identity Formation

Lee, Albert — UCLA

Movement Institutionalization as a Strategic Choice: A Dual Strategy of Contention and Engagement by the Korean Women's Movement

Suh, Doowon — Korea University

Corporate Childcare Centers in Japan: The Corporate Behavior by a Coercive Component

Nakamura, Tsuyako — Doshisha University

Thursday

Time: 2:40 - 4:10 PM

6/3/2010

Room: Kauai

Session Topic: Education

Session Chair: Huang, Hsin Shu

Frequently Helping Techniques in Self-Help Educational Group Therapy

Huang, Hsin Shu — National Changhua University of Education

Themes and Communication Types of Schizophrenia Patients in Self-Help Educational Group Therapy

Huang, Hsin Shu — National Changhua University of Education

Cheng, Tsun Chi — Buddhist Tzu Chi General Hospital, Taichung Branch

Wang, Chih Hung — National Changhua University of Education

Defining Persistence: Students with a GED in Four-Year Institutions

Young, Luria — Southern University and A&M College

Thursday

Time: 2:40 - 4:10 PM

6/3/2010

Room: Molokai

Session Topic: History

Session Chair: Latimore, Carey

Reconstruction and Restoration of Richmond, Virginia, 1865 to 1870

Latimore, Carey — Trinity University

Local Drivers of Land-Use Change: Study of an Arid Region in Pre-Colonial India

Singh, Vipul — Motilal Nehru College (University of Delhi)

Disease, Sanitation and the Body: Portrayals of Asians in Meiji Era (1868-1912) Japanese Medical Journals

Padilla, Roberto — University of Toledo

Thursday

Time: 2:40 - 4:10 PM

6/3/2010

Room: Queen Liliuokalani

Poster Session

The Cost-Effectiveness of Instruction Expenditures Towards Native Hawaiian Public High School Completers

Ng, Larson — University of Hawaii at Manoa

Residential Transformation Across the Bayou City: The Impact of Ethnic Diversity on Segregation within Houston, Texas; 1990-2000

Strait, John — Sam Houston State University

Conformity in Adolescence

Cakirpaloglu, Simona — Palacky University, Olomouc, Czech Republic

Cakirpaloglu, Panajotis — Palacky University, Olomouc, Czech Republic

Cakirpaloglu, Snezana — Palacky University, Olomouc, Czech Republic

Rehan, Vladimir — University Palacky, Philosophical Faculty, Olomouc, Czech Republic

A Survey of the Knowledge About Influenza A (H1N1) and Compliance With Precautions Among Nurses in Taiwan

Cheng, Hui-Fang — Nurse Practitioner

Wu, Chia-Jung — Assistant professor of nursing

The Effect on Teaching CVP Simulator: Application of TAM

Wu, Shu-Hua — Central Taiwan University of Science and Technology/ Chung Jen College of Nursing, Health Sciences and Management

Lin, Li-Feng — Central Taiwan University of Science and Technology

A Study on the Correlation of BMI and Physical Activity among Middle-age People

Kuo, Mei-Yin — Director of Nursing Department, Chung Jen College of Nursing, Health Sciences and Management

Lin, Li-Feng — Central Taiwan University of Science and Technology

Yang, Wei-Chi — Chung Jen College of Nursing, Health Sciences and Management

Wu, Shu-Hua — Central Taiwan University of Science and Technology/ Chung Jen College of Nursing, Health Sciences and Management

Life is Worth Living: Fostering Resilience Through Attachment

Everall, Robin — University of Alberta

The Shaping of Public Opinion on Government Spending

Henninger, Charles — Chapman University

The Reappearing Voter: Voter Participation within the 2008 Presidential Election

Delpassand, Alia — Chapman University

The Study of the Competency for Pre-press Professionals

Liao, Shin — National Taiwan Normal University

Style Discourses in the Subculture Studies

Yang, Chui-Chu — National Taiwan Normal University

Brand Loyalty Towards Sport Sponsorship's Product: A Case Study of Coke-Cup Football Tournament in Thailand

Chantrawatanakul, Sudarat — Bangkok University

Phalajivin, Chanvit — Sports and Recreation Development Department

Anantasuk, Chamlong — National Broadcasting Service of Thailand

Muangchuen, Boontun — Sport Authority of Thailand

Dissayawattana, Sarawut — Thai Namthip Co.Ltd.

Changes in the Use of Preventive, Family Planning, and Contraceptive Care among Medicaid-covered Teens in Florida and Georgia from 1994/95 to 2000/01

Adams, E. Kathleen — RSPH, Emory University
Ayadi, Femi — University of Houston, Clear Lake
Gavin, Norma — IMPAQ

Family Centered Care of Stroke Survivors and Care Partners during Constraint Induced Therapy (CARE-CITE)

Blanton, Sarah — Emory University
Clark, Patricia — Georgia State University
Cussen, Deborah — Emory University
Holmes, Ashley — Emory University
Regan, Bridget — Emory university
Schwartz, Colleen — Emory University

Late 20th Century Landscape Change in California

Sleeter, Benjamin — USGS
Benito, Maria — USGS

Thursday

Time: 2:40 - 4:10 PM

6/3/2010

Room: Territorial I

Session Topic: Cross-disciplinary areas of Social Sciences

Session Chair: Ormsby, Alison

Researching Sacred Forests of India using a Social Science Approach

Ormsby, Alison — Eckerd College

Jatropha Oil as a Cheap Biodiesel

Soetikno, Wendie Razif — Keluarga Bunda Foundation

A New Integrate Climate Change Modeling System with Future Social Economical Development Scenarios

Wang, Hanjie — Key Laboratory of Regional Climate-Environment Research for Temperate East Asia (RCE-TEA), C AS

Imaging Conservation: Sea Turtle Murals and Their Affect on Communities' Environmental Consciousness and Behaviours in Baja California Sur, Mexico

Irizarry, Alyssa — Tufts University

Thursday

Time: 2:40 - 4:10 PM

6/3/2010

Room: Territorial II

Session Topic: Economics

Session Chair: Herzog, Bodo

Do We Need More Regulation in Finance?

Herzog, Bodo — ESB Business School

Credit Chains and Mortgage Crises

Hernandez Verme, Paula — Universidad de Guanajuato

Thursday

Time: 2:40 - 4:10 PM

6/3/2010

Room: Territorial III

Session Topic: Other Areas of Social Science

Session Chair: Kim, Jong Eun

Internet Browser or Buyer: Developing a Profile of Internet Browsers and Buyers

Kim, Jong Eun — California State University, Northridge

Being Modest? Exploring the Effect of Modesty on Today's Fashion Consumers

Page, Aleisha — California State University, Fresno

Davis, Lizhu — California State University, Fresno

Effects of Social Interaction and Loneliness on Teenagers' Mall Shopping Experiences: An Exploratory Study

Davis, Lizhu — California State University, Fresno

Seepersad, Sean — California State University, Fresno

Friday

Time: 8:00 - 9:30 AM

6/4/2010

Room: Kaiulani I

Session Topic: Urban and Regional Planning

Session Chair: Zeng, Jinghan

Strategic Plan on Promoting Macau Cultural Tourism

Zeng, Jinghan — University of Pittsburgh

Trying to Measure, If Not Evaluating the Performance of State Economies in Times of Joblessness

Brierly, Allen — UNI

Friday

Time: 8:00 - 9:30 AM

6/4/2010

Room: Kaiulani II

Session Topic: Sociology

Session Chair: Sironi, Emiliano

The role of Union Formation on Fertility in Bulgaria

Sironi, Emiliano — Università Commerciale Luigi Bocconi

Carioli, Alessandra — University of Groningen

Friday

Time: 8:00 - 9:30 AM

6/4/2010

Room: Kauai

Session Topic: Geography

Session Chair: Ying, Killian

A Geography of Physical Fitness in Los Angeles County Schools

Ying, Killian — California State University, Los Angeles

Gongora, Gaspar — Los Angeles Unified School District

Three Guidelines for Developing a Geography Curriculum for a Summer Camp

Collins, Gabrielle — University of Nebraska at Lincoln

Friday

Time: 8:00 - 9:30 AM

6/4/2010

Room: Molokai

Session Topic: Women's Studies

Session Chair: Khor, Yoke Lim

Gender Mainstreaming and Corporate Social Responsibility: Reporting on Gender Equality in Selected Malaysian Companies

Khor, Yoke Lim — Universiti Sains Malaysia

Shuib, Rashidah — Universiti Sains Malaysia

Osman, Intan — Universiti Sains Malaysia

Amran, Azlan — Universiti Sains Malaysia

To Strengthen Young Women's Self-Perception

Retzlaff, Hazel — Minnesota State University Moorhead

Friday

Time: 8:00 - 9:30 AM

6/4/2010

Room: Territorial I

Session Topic: Ethnic/International Studies

Session Chair: Grosscup, Beau

Cluster Munitions and State Terrorism

Grosscup, Beau — California State University, Chico

Friday

Time: 9:40 - 11:10 AM

6/4/2010

Room: Kaiulani I

Session Topic: Psychology

Session Chair: Johnson, Jeannette

Submitting an Application to the National Institutes of Health: Resources and Review

Johnson, Jeannette — National Institute on Aging

Correlates of Heavy Drinking in College Students

Colby, Suzanne — Brown University

Colby, John — Brown University

Corno, Catherine — Brown University

Social and Cultural Aspects of Body Image, Obesity and Health Risk Practices

Boyd-Starke, Kimberly — Virginia State University

Whittington, Marcina — Virginia State University

Perkins, Patrice — Virginia State University

Friday

Time: 9:40 - 11:10 AM

6/4/2010

Room: Kaiulani II

Session Topic: Sociology

Session Chair: Wilson-Rood, Colleen

Learning Online: Perspectives from an Introduction to Sociology Course

Wilson-Rood, Colleen — Michigan State University

Bokemeier, Janet — Michigan State University

Service Is Joy: Lessons in Community Empowerment - A 30 Minute Documentary

Iseke - Okada, Sandra — University of Guam

Quintanilla, Melissa — University of Guam

Mugol, Myracle — University of Guam

Dela Rosa, Dante — University of Guam

Umayam, Jeffry — University of Guam

Johnson, Kirk — University of Guam

False Divides?: Blurring the Boundary of Private/Public Sectors and Sensibilities

Helstein, Michelle T. — University of Lethbridge

Friday

Time: 9:40 - 11:10 AM
Session Topic: Education
Session Chair: Mohamed Nada, Mona

6/4/2010

Room: Kauai

Using the Body Language in Reading the Significances of Art Work for the Non-Specialized in Art
Mohamed Nada, Mona — Education

Friday

Time: 9:40 - 11:10 AM
Session Topic: History
Session Chair: Jarquin, Griselda

6/4/2010

Room: Molokai

Sandino: Bandit? Or Hero?
Jarquin, Griselda — SFSU

Rubén Darío, "Prince of Castilian Letters"
Jarquin, Griselda — SFSU

Machiavelli's French Counterpart - Claude de Seyssel (1450-1520): Humanist, State Councilor and Political Theorist
Tabri, Edward — University of Texas at Tyler

Friday

Time: 9:40 - 11:10 AM
Session Topic: Cross-disciplinary areas of Social Sciences
Session Chair: Bibbs, C. Susheel

6/4/2010

Room: Territorial I

Lecture-Discussion-Film-Q & A on Mary Ellen Pleasant - A Friend of John Brown
Bibbs, C. Susheel — University of California, Berkeley

Friday

Time: 9:40 - 11:10 AM
Session Topic: Economics
Session Chair: Ventosa-Santaularia, Daniel

6/4/2010

Room: Territorial II

Pitfalls in Testing for Cointegration: The Engle-Granger Test in the Presence of Breaks
Ventosa-Santaularia, Daniel — Universidad de Guanajuato
Noriega, Antonio E. — Universidad de Guanajuato

Explaining the Labor Wedge Trends: An Equilibrium Search Approach
Quintero-Rojas, Coralia — University of Guanajuato
Langot, Francois — University of Maine

Distortionary Taxation, International Business Cycles and Real Wage: Explaining Some Puzzling Facts
Quintero-Rojas, Coralia — University of Guanajuato
Langot, Francois — University of Maine

Friday

Time: 9:40 - 11:10 AM

6/4/2010

Room: Territorial III

Session Topic: Communication

Session Chair: Al-Doassary, Hamad

Harnessing Technology to Enhance Communication in the English Classroom: A Study from Saudi Arabia

Al-Doassary, Hamad — King Khalid University

Bridging the Digital Divide for Thai Elderly People

Anantho, Siriwan — Sukhothai Thammathirat Open University

Culture and Campaign Communication: China's "One Child Per Couple" Campaign

Wang, Jianglong — Western Washington University

Friday

Time: 11:20 AM - 12:50 PM

6/4/2010

Room: Kaiulani I

Session Topic: Social Work

Session Chair: Cox, Kathy

Managing Secondary Traumatic Stress in Social Work

Cox, Kathy — California State University, Chico

Measuring On-the-Job Performance: A Mental Health Competency Project

Cary, Dorbea — California State University, Stanislaus

Keefer, Brian — California Department of Mental Health

Shilton, Adrienne — California Institute of Mental Health

Healthy Aging: Social Work & Health Care Professionals' Perspectives

Garcia Biggs, Mary Jo — Texas State University-San Marcos

Knox, Karen S. — Texas State University-San Marcos

Hill-Jones, Sally — Texas State University-San Marcos

Friday

Time: 11:20 AM - 12:50 PM

6/4/2010

Room: Kaiulani II

Session Topic: Sociology

Session Chair: Sun, Jue

Falling In and Out of Cosmopolitan Romance

Sun, Jue — The University of Hong Kong

Retirement Funding: Expectations of Income Sources and Income Reliance

Bokemeier, Janet — Michigan State University

Whitaker, Elizabeth Ann — Michigan State University

Wilson-Rood, Colleen — Michigan State University

The Politics of Smoke: Why Anti-Tobacco Policy and Legislation is a Diversity Issue

Conrad, Browyn — Pittsburg State University

Friday

Time: 11:20 AM - 12:50 PM

6/4/2010

Room: Molokai

Session Topic: Women's Studies

Session Chair: Olasupo, Fatai

Gender Balance in Governance: The Faking of African Tradition by The United Nations

Olasupo, Fatai — Obafemi Awolowo University

WAVES OF CHANGE: Capturing Life on Guam Moments Before the Military Build Up in 2010

Johnson, Kirk — University of Guam

Almonte, Heidi — University of Guam

Chua, Jason — University of Guam

Calvo, Eddie — University of Guam

Diaz, Rethleje — University of Guam

Donnell, Sarah — University of Guam

Fielder, Jahlil — University of Guam

Francisco, Leland — University of Guam

Guerrero, Perry — University of Guam

Hadley, Alison — University of Guam

Ku, Kyongmo — University of Guam

Laanan, Joseph — University of Guam

Neth, Meicy — University of Guam

Pladevega, Jillian — University of Guam

Redilla, Janelle — University of Guam

Salas, Cristal — University of Guam

Sison, Danella — University of Guam

Idiot's Delight: Censorship and the Adaptation Process

Engelman, Elizabeth — San Jose State University

Characterizing Character: A Re-Situationing of Moral Psychology

Waller, Sara — Montana State University

Stephenson, Jeffrey — Case Western Reserve University

Friday

Time: 11:20 AM - 12:50 PM

6/4/2010

Room: Territorial II

Session Topic: Economics

Session Chair: Osborne, Theodore

Excess Capacity, Barriers to Entry and Industry Structure

Osborne, Theodore — King's University College

Teaching Economics: Approaches to Instructional Design

Wieland, Oxana — University of Minnesota - Crookston

Infant Delivery Costs Related to Maternal Smoking: An Update

Adams, E. Kathleen — RSPH, Emory University

Melvin, Cathy L — University of North Carolina

Joski, Peter — Kaiser Permanente of Georgia

Raskind-Hood, Cheryl — RSPH, Emory University

Friday

Time: 11:20 AM - 12:50 PM

6/4/2010

Room: Territorial III

Session Topic: Other Areas of Social Science

Session Chair: Fleming, Daniel

Globalisation and the Capture of Labour Value in Asia. A research agenda.

Fleming, Daniel — Roskilde University

Strategy on Housing for the Urban Poor Towards Slum Free Andhra Pradesh in India

Vidyasger Reddy, Vancha — N.O. Campus

Sathyam, Medipally — Osmania University

Sexual Motives: Cross-Cultural, Historical, Evolutionary, and Biopsychosocial Perspectives

Luckhurst, Cherie — University of Hawaii at Manoa

Friday

Time: 1:00 - 2:30 PM

6/4/2010

Room: Kaiulani I

Session Topic: Psychology

Session Chair: Faucett, John

Personality and Job-Related Attitudes of United Methodist Pastors

Faucett, John — University of Arkansas at Little Rock

Poling, Tom — University of Arkansas at Little Rock

Corwyn, Robert — University of Arkansas at Little Rock

Davis, Georgia — University of Arkansas at Little Rock

Introduction to Applied Psychology

Faucett, John — University of Arkansas at Little Rock

Elders as Place-Makers in Dying Small Towns: A Collective Case Study from the Great Plains

Scheidt, Rick — Kansas State University

Friday

Time: 1:00 - 2:30 PM

6/4/2010

Room: Kaiulani II

Session Topic: Sociology

Session Chair: de Sa, M. Gloria

Portuguese Immigrants and Self-Employment: Ethnic and Class Resources or Opportunity Structure?

de Sa, M. Gloria — University of Massachusetts Dartmouth

Hostile, Opportunistic Bias: A Criminogenic Perspective Rooted in Persistent Exposure to Threat and Coercion

Simons, Ronald — University of Georgia

Gordon Simons, Leslie — University of Georgia

Friday

Time: 1:00 - 2:30 PM
Session Topic: Education
Session Chair: Lytle, Alan

6/4/2010

Room: Kauai

Basic Practices: Using Second Language Acquisition Techniques in Undergraduate Classes
Lytle, Alan — University of Arkansas at Little Rock

The Ideal Teaching Models and Norms: A 'China English' Perspective in the Context of World Englishes
He, Deyuan — City University of Hong Kong
Zhang, Qunying — the University of Hong Kong

Understanding the Processes of Building Intergroup Relationships and Oral English Proficiency: Multiple Case Studies of Japanese Sojourning Children in a U.S. Public Elementary School
Koga, Nari — Boston College

Friday

Time: 1:00 - 2:30 PM
Session Topic: Political Science
Session Chair: Conway, Margaret

6/4/2010

Room: Molokai

Do Term Limited State Legislators Continue Their Political Careers?
Conway, Margaret — University of Florida
Edwards, Pamela — Saginaw State University

Keeping the Misery to a Minimum, through the Good Times and Bad: Evidence of Partisan State Political Business Cycles
Brierly, Allen — UNI

Racial Polarization in the 2008 U.S. Presidential Election
Taylor, Steven — American University

Friday

Time: 1:00 - 2:30 PM

6/4/2010

Room: Queen Liliuokalani

Poster Session

An Exploratory Study Addressing the Stress and Self Care Levels of Social Work Graduate Students

Ortiz, Karen — California State University, Northridge

Rahimian, Pantea — California State University, Northridge

Learning Attributes of Vocational Shipping Management Curriculum

Han, Tzeu-Chen — National Penghu University

Liu, Li-Jen — National Penghu University

Hung, Shu-Chin — National Penghu University

Attitudes towards Money of Various Social Groups

Lemrova, Sona — Palacky University, Olomouc, Czech Republic

Reiterova, Eva — Palacky University, Olomouc, Czech Republic

Sovadinova, Milada — Palacky University, Olomouc, Czech Republic

Helping Others Online: Recommendations for Help Service Providers

Greidanus, Elaine — University of Alberta

Everall, Robin — University of Alberta

Increasing Self-Efficacy for Exercise: An Everyday Problem-Solving Analysis

Artistico, Daniele — Baruch College - CUNY

Bharth, Gursharan — Baruch College - CUNY

Gorbach, Lyubov — Baruch College - CUNY

Hargrove, Jacqueline — Baruch College - CUNY

Black, Justin — Baruch College - CUNY

Dye, Christopher — Baruch College - CUNY

Assessing Personality Characteristics and Intentions of Marijuana Use Amongst College Students

Gorbach, Lyubov — Baruch College - CUNY

Artistico, Daniele — Baruch College - CUNY

Bharth, Gursharan — Baruch College - CUNY

Ostracism Impacts Judgments of the Source, Reconnection and Social Well-Being

Dingwall, Alison — Howard University

Wallace, Candice — Howard University

Sloan, Lloyd Ren — Howard University

Professional Football Team Managers: Increasing or Diminishing Sustainability

Disayawattana, Sarawut — Sripatum University

Mahaweera, Sahaschai — Sripatum University

Taesillapasathit, Anupong — Sripatum University

Yuvanont, Prangtip — Sripatum University

Perioperative Nursing Model to Enhance Sexual Knowledge of post-Hysterectomy Women - A Pilot Study in Taiwan

Mei, Ming-Hsin — Central Taiwan University of Science and Technology

Hung, Liang-Guei — National Sun Yet-sen University

Hsu, Wan-Yun — RN

Lu, Chien-Hsing — MD

Huang, Pei-Chen — MD

Investigation of Ultimate Condition for Barge Racing Grand Slam in Thailand: O.C.A. Profile (Outstanding Competitive Advantage Profile)

Mahaweera, Sahaschai — Sripatum University

Yuvanont, Prangtip — Sripatum University

Football as a Tool to Enhance the Health and Unity of the Nation

Akkapoo, Amorntat — Sports and Recreation Development Department

Boonjun, Nattee — Prince of Songkla University

Jindareung, Chalermopol — Rajaphat Suandusit University

Sangpoa, Somsak — Sripatum University

The Sustainable Development of Muay Thai Through the Understanding of Thai People's Attitude

Buristrakul, Prayoon — Sripatum University

Yuvanont, Prangtip — Sripatum University

Social Science Faculty as Mentors: Barriers and Benefits to Mentoring Undergraduate Research

Gordon, Ann — Chapman University

Tellier, Nicole — Chapman University

Gordon, Sarah — Utah State University

American White Test-givers Produce Stereotype Threat Damage but British Whites Don't, Suggesting that African Americans Expect Different Levels of Prejudicial Stereotyping by Nationality

Sloan, Lloyd Ren — Howard University

Van Camp, Debbie — Howard University

Wilburn, Grady — Howard University

Barden, Jamie — Howard University

Martin, Daniel — California State University, Hayward

Friday

Time: 1:00 - 2:30 PM

6/4/2010

Room: Territorial I

Session Topic: Cross-disciplinary areas of Social Sciences

Session Chair: Lee, Albert

Tracing Emasculation: The Chinaman Bachelor & Deviant Sexuality

Lee, Albert — UCLA

Inter-Color Couples and Mixed-Color Families in a Mixed-Race Society

Sue, Christina — University of Colorado, Boulder

The Importance of Rape Myth Acceptance Among Police Officers Taking Sexual Assault Complaints: Do Attitudes Matter?

Rich, Karen — Marywood University

Friday

Time: 1:00 - 2:30 PM

6/4/2010

Room: Territorial II

Session Topic: Public Administration

Session Chair: Pommer, Sieglinde

Reinventing Government: U.S. and European Comparative Perspectives

Pommer, Sieglinde — University of California, Hastings / Vienna University

E-Government in Policing: Unravelling the Factors that Influence Website Development Among US Police Departments

de Guzman, Melchor — The College at Brockport, State University of New York

Jones, Matthew — Portland State University

Saturday

Time: 8:00 - 9:30 AM

6/5/2010

Room: Territorial II

Session Topic: Economics

Session Chair: Luscombe, Calvin

Secondary-School Graduates and Economic Growth in Hawaii

Luscombe, Calvin — University of Hawaii at Hilo

Vu, Tam — University of Hawaii at Hilo

University of Hawaii and Hawaiian Economy

Brown, Terianne — University of Hawaii at Hilo

Vu, Tam — University of Hawaii at Hilo

Secondary-School Graduates and Labor Productivity in Hawaii

Luscombe, Calvin — University of Hawaii at Hilo

Vu, Tam — University of Hawaii at Hilo

Saturday

Time: 9:40 - 11:10 AM

6/5/2010

Room: Kauai

Session Topic: Education

Session Chair: Drumm, Morris

Private Universities and Constituent Accountability

Drumm, Morris — Texas Christian University

Exploring the Alignment Between Postsecondary Education Programs and Labour Market Outcomes for Recent Graduates

Frank, Kristyn — University of Guelph

Walters, David — University of Guelph

Constraints of Management Dynamics of Higher Education in Pakistan

Ghufran Ali Khan, Hafiz — International Islamic University

Saturday

Time: 9:40 - 11:10 AM

6/5/2010

Room: Molokai

Session Topic: Political Science

Session Chair: Zeng, Jinghan

The Beijing Olympics and the Rising of Nationalism

Zeng, Jinghan — University of Pittsburgh

Political Institutions, Organizational Purposes, and State's Policy Bias: the Politics of Agricultural Assistance Programs in Thailand

Laiprakobsup, Thanapan — University of Houston

Saturday

Time: 9:40 - 11:10 AM

6/5/2010

Room: Territorial I

Session Topic: Cross-disciplinary areas of Social Sciences

Session Chair: Hawker, Ronald

Lorimer.net: Charting Tribal and Migrant Populations in the Early Twentieth Century Persian/Arabian Gulf

Hawker, Ronald — Zayed University

Innovative Approach to Community Based Research: Integrating Two Methods to Understand Immigrants' Perceptions of Neighborhood Influences on Health

Haque, Nasim — Wellesley Institute

Rosas, Scott — Concept Systems, Inc

Restless Souls: Burmese Children on the Border

Allmark, Panizza — Edith Cowan University

Saturday

Time: 9:40 - 11:10 AM

6/5/2010

Room: Territorial II

Session Topic: Economics

Session Chair: Gallet, Craig

A Meta-Analysis of the Price Elasticity of Meat: Evidence of Regional Differences

Gallet, Craig — California State University, Sacramento

Using a Social Capital Lens to Design Agricultural Productivity Programs (with application to the Philippines)

Edillon, Rosemarie — La Trobe University

Saturday

Time: 9:40 - 11:10 AM

6/5/2010

Room: Territorial III

Session Topic: Communication

Session Chair: Baek, Yunjung

The Power of Two Beyonces

Baek, Yunjung — Whatcom Community College

Beard, Bryan — Whatcom Community College

Drayer, John — Whatcom Community College

Icay, Amber — Whatcom Community College

Kaneshige, Hana — Whatcom Community College

Lizard Lake: An Agenda Setting and Semiotic Analysis

Kaneshige, Hana — Whatcom Community College

Jike, Elin — Whatcom Community College

Saturday

Time: 11:20 AM - 12:50 PM

6/5/2010

Room: Molokai

Session Topic: Psychology

Session Chair: Rempala, Daniel

Interhemispheric Communication and Emotional Regulation

Rempala, Daniel — Keimyung University

Mobbing in Czech Republic

Cakirpaloglu, Panajotis — Palacky University, Olomouc, Czech Republic

Cakirpaloglu, Simona — Palacky University, Olomouc, Czech Republic

Cakirpaloglu, Snezana — Palacky University, Olomouc, Czech Republic

Saturday

Time: 11:20 AM - 12:50 PM

6/5/2010

Room: Territorial I

Session Topic: Cross-disciplinary areas of Social Sciences

Session Chair: Boys, Stephanie

The Millennials Refuse to be Ignored! How the Obama Administration's Use of Email Furthers the Political Engagement of a New Generation

Boys, Stephanie — Indiana University

Teaching Evaluation: Cross-Disciplinary Research on Data-Based Decision Making and Graduate Training in Public Health and Educational Administration

Shepperson, Tara — Eastern Kentucky University

Fierro, Leslie — Claremont Graduate University

Social Health Inequities in Roma and Majority Population in Europe

Rimarova, Kvetoslava — Faculty of Medicine, Kosice, Slovakia

Effects of Discourse on Women's Exercise Choices

Sheriff, Constance — University of Lethbridge

Saturday

Time: 11:20 AM - 12:50 PM

6/5/2010

Room: Territorial II

Session Topic: Economics

Session Chair: Moreno, Alejandro

Habit Formation and Oligopolistic Competition

Moreno, Alejandro — University of Guanajuato

Group Fairness and Game Theory

Moreno, Alejandro — University of Guanajuato

Saturday

Time: 1:00 - 2:30 PM
Session Topic: Education
Session Chair: Green, Kellie

6/5/2010

Room: Kauai

Participant Perceptions of Undergraduate Research Integrated into the Chemistry Curriculum

Green, Kellie — Purdue University
Rovira-Figueroa, Nahyr — Purdue University
Szteinberg, Gabriela — Purdue University
Weaver, Gabriela — Purdue University

The Role of Input in Second Language Learning

Alhamad, Majed
Majed — King Saud University

The Impact of Co-Education on Saudi Arabian Students: Applying on Saudi Arabian Students Who Used Co-Education

Alsaif, Omar — Saudi Arabia

Saturday

Time: 1:00 - 2:30 PM
Session Topic: Social Work
Session Chair: Ringstad, Robin

6/5/2010

Room: Molokai

The Research / Practice Partnership: Co-curricular Service Learning

Ringstad, Robin — California State University, Stanislaus

A Review of Rigor in Qualitative Social Work Research

Gringeri, Christina — University of Utah
Barusch, Amanda — University of Utah
George, Molly — Salt Lake City

What Makes It Feminist: Mapping the Landscape of Feminist, Social Work Research

Gringeri, Christina — University of Utah
Wahab, Stephanie — Portland State University
Anderson-Nathe, Ben — Portland State University

Saturday

Time: 1:00 - 2:30 PM
Session Topic: Communication
Session Chair: Hobbs, Pamela

6/5/2010

Room: Territorial III

Not Semantics but Just Results: The use of Linguistic Analysis in Constitutional Interpretation

Hobbs, Pamela — UCLA

A New View on Improving Deception Detection Training Programs

Bertrand, Heather — Colorado State University

Author Index:

Adams, E. Kathleen — RSPH, Emory University	25, 31
Aissaoui, Alex — University of Helsinki	21
Akbar, Ginneh — University of Pennsylvania	15
Akkapoo, Amorntat — Sports and Recreation Development Department.....	35
Al-Doassary, Hamad — King Khalid University	30
Alhamad, Majed	39
Alim, H. Samy — Stanford University	9
Allmark, Panizza — Edith Cowan University	37
Almonte, Heidi — University of Guam	31
Alqashan, Humoud — Kuwait University.....	10
Alsaif, Omar — Saudi Arabia	39
Ambrosius, Joshua — University of Louisville	20
Amran, Azlan — Universiti Sains Malaysia	27
Anantasuk, Chamlong — National Broadcasting Service of Thailand	24
Anantho, Siriwan — Sukhothai Thammathirat Open University.....	30
Anderson-Nathe, Ben — Portland State University	39
Arai, Kota — Toyohashi University of Technology	12
Artistico, Daniele — Baruch College - CUNY	34
Ayadi, Femi — Univesity of Houston, Clear Lake	25
Bachman, Guy — California State University, Long Beach.....	14
Baek, Yunjung — Whatcom Community College	37
Bagale, Merina — Development Activist	22
Bailey, Ajay — University of Groningen.....	10
Barden, Jamie — Howard University.....	35
Barusch, Amanda — University of Utah.....	39
Beard, Bryan — Whatcom Community College.....	37
Beaudry, Shannon — Roosevelt University.....	15
Benito, Maria — USGS.....	25
Bertrand, Heather — Colorado State University.....	39
Bharth, Gursharan — Baruch College - CUNY	34
Bibbs, C. Susheel — University of California, Berkeley	9, 29
Bieber, Tonia — University of Bremen	21
Bivens, Van — University of Arkansas	15
Black, Justin — Baruch College - CUNY	34
Blanton, Sarah — Emory University.....	14, 25
Bokemeier, Janet — Michigan State University	28, 30
Boonjun, Nattee — Prince of Sonkla University.....	35
Bordelon, Thomas — University of Southern Indiana.....	16
Boyd-Starke, Kimberly — Virginia State University.....	28
Boys, Stephanie — Indiana University	17, 19, 38
Bridges, Stephen — University of West Florida.....	19
Brierly, Allen — UNI.....	27, 33
Brown, Terianne — University of Hawaii at Hilo	36
Buristrakul, Prayoon — Sripatum University	35
Çakır, Mesut — Adnan Menderes University	16
Cakirpaloglu, Panajotis — Palacky University, Olomouc, Czech Republic.....	24, 38

Cakirpaloglu, Simona — Palacky University, Olomouc, Czech Republic	24, 38
Cakirpaloglu, Snezana — Palacky University, Olomouc, Czech Republic	24, 38
Calvo, Eddie — University of Guam	31
Carioli, Alessandra — University of Groningen	27
Caro, Erka — University of Groningen.....	10
Cary, Dorbea — California State University, Stanislaus	30
Cassar, Alessandra — University of San Francisco	21
Chan, David — City University of Hong Kong	8
Chantrawatanakul, Sudarat — Bangkok University.....	19, 24
Chen, Ching-Hai — Ching-Hai Psychiatric Hospital.....	13
Chen, Yi-Chun — Central Taiwan University of Science and Technology.....	13
Cheng, Hui-Fang — Nurse Practitioner	24
Cheng, Tsun Chi — Buddhist Tzu Chi General Hospital, Taichung Branch.....	23
Cherneff, Anya — University of Denver	16
Chiu, Tzu-I — Central Taiwan University of Science and Technology	13
Chua, Jason — University of Guam	31
Chui, Wing Hong — The University of Hong Kong.....	20
Chung, Shu-Ying — Central Taiwan University of Science and Technology.....	13
Clark, Patricia — Georgia State University	25
Cleland Quibell, Nancy — Socio-Environmental Research.....	22
Colby, John — Brown University	28
Colby, Suzanne — Brown University	28
Collins, Gabrielle — University of Nebraska at Lincoln	27
Conrad, Browyn — Pittsburg State University	30
Conway, Margaret — University of Florida.....	33
Corno, Catherine — Brown University	28
Corra, Mamadi — East Carolina University	20
Corwyn, Robert — University of Arkansas at Little Rock	32
Cox, Kathy — California State University, Chico	30
Cussen, Deborah — Emory University	25
David, Maya Khemlani — University of Malaya	22
Davis, Georgia — University of Arkansas at Little Rock.....	32
Davis, Lizhu — California State University, Fresno.....	26
de Guzman, Melchor — The College at Brockport, State University of New York.....	35
de Sa, M. Gloria — University of Massachusetts Dartmouth.....	32
Deen, Rebecca — University of Texas at Arlington	21
Dela Rosa, Dante — University of Guam	28
Delpassand, Alia — Chapman University.....	24
Demko, George — Dartmouth College	10
DeWees, Mari — FGCU	15
Diaz, Mery — University of Pennsylvania.....	20
Diaz, Rethleje — University of Guam	31
Dingwall, Alison — Howard University	34
Disayawattana, Sarawut — Sripatum University	34
Dissayawattana, Sarawut — Thai Namthip Co.Ltd.....	24
Dodson, Chaka — California State University, Dominguez Hills	18
Doğanyılmaz, Gozde — Düzce University	12, 16
Doma, Crescencio Jr. — University of Santo Tomas.....	17

Donaldson, Shirl — Purdue University	20
Donnell, Sarah — University of Guam	31
Drayer, John — Whatcom Community College.....	37
Drumm, Morris — Texas Christian University.....	13, 36
Dye, Christopher — Baruch College - CUNY	34
Edillon, Rosemarie — La Trobe University.....	37
Edwards, Pamela — Saginaw State University.....	33
EIBassiouny, Amanda — Howard University.....	18
Engelman, Elizabeth — San Jose State University	31
Everall, Robin — University of Alberta.....	24, 34
Fang, Xingming — Southwestern University of Finance and Economics	16
Faucett, John — University of Arkansas at Little Rock.....	32
Fergus, Rob — Audubon Society.....	9
Fielder, Jahlil — University of Guam	31
Fierro, Leslie — Claremont Graduate University	38
Fleer, Marilyn — Monash University	18
Fleming, Daniel — Roskilde University	32
Francisco, Leland — University of Guam.....	31
Frank, Kristyn — University of Guelph	36
Frank, Marie — University of Massachusetts, Lowell.....	22
Gallet, Craig — California State University, Sacramento.....	37
Garcia Biggs, Mary Jo — Texas State University-San Marcos	30
Gavin, Norma — IMPAQ.....	25
George, Molly — Salt Lake City.....	39
Ghufran Ali Khan, Hafiz — International Islamic University	36
Gilderbloom, John — University of Louisville.....	20
Gipps, John — Monash University	18
Givertz, Michelle — California State University, Chico	14
Goldstein, Martin — Widener University	11
Gómez, Manuel — Universidad de Guanajuato.....	19
Gongora, Gaspar — Los Angeles Unified School District.....	27
Gorbach, Lyubov — Baruch College - CUNY	34
Gordon Simons, Leslie — University of Georgia	32
Gordon, Ann — Chapman University.....	35
Gordon, Sarah — Utah State University	35
Green, Kellie — Purdue University.....	39
Greenberg, Heywood — Lynchburg College.....	8
Greidanus, Elaine — University of Alberta	34
Griffin, Sheila — Southern University and A&M College	18, 21
Gringeri, Christina — University of Utah	39
Grosscup, Beau — California State University, Chico	28
Gu, Jingping — University of Arkansas.....	16
Guerrero, Perry — University of Guam	31
Hadley, Alison — University of Guam	31
Han, Tzeu-Chen — National Penghu University	34
Hanka, Matthew — University of Louisville	20
Haque, Nasim — Wellesley Institute	20, 37
Hargrove, Jacqueline — Baruch College - CUNY.....	34

Hattori, Takahiko — Otsuma Women's University.....	13
Hawker, Ronald — Zayed University	37
He, Deyuan — City University of Hong Kong	33
Helstein, Michelle T. — University of Lethbridge.....	28
Henninger, Charles — Chapman University	24
Hernandez Verme, Paula — Universidad de Guanajuato	16, 25
Herzog, Bodo — ESB Business School	25
Hill-Jones, Sally — Texas State University-San Marcos	30
Hobbs, Pamela — UCLA	39
Hodgson, Michael — University of South Carolina	13
Holmes, Ashley — Emory University.....	25
Holt, James — Centers for Disease Control and Prevention.....	8
Howard-Wagner, Deirdre — University of Sydney	16
Howland, Robert — University of Pittsburgh	8
Hsu, Wan-Yun — RN.....	34
Huang, Hsin Shu — National Changhua University of Education	13, 23
Huang, Pei-Chen — MD	34
Hull, Kerry — Reitaku University.....	9
Hung, Liang-Guei — National Sun Yet-sen University.....	34
Hung, Shu-Chin — National Penghu University	34
Icay, Amber — Whatcom Community College	37
İkizoğlu, Musa — Adnan Menderes University.....	16
Im, Jungho — SUNY College of Environmental Science & Forestry	13
Irizarry, Alyssa — Tufts University	25
Iseke - Okada, Sandra — University of Guam	28
Itakura, Shoji — Kyoto University.....	12
Jackson, Sarah — Indiana University of Pennsylvania	19
Jacobson, Cardell — Brigham Young University	20
Jane, Beverley — Monash University	18
Jarquín, Griselda — SFSU	29
Jensen, John — University of South Carolina.....	13
Jike, Elin — Whatcom Community College	37
Jindareung, Chalernpol — Rajaphat Suandusit University	35
Johnson, Jeannette — National Institute on Aging	10, 28
Johnson, Kirk — University of Guam	10, 28, 31
Jones, Fiona — St. George's University, London.....	14
Jones, Matthew — Portland State University.....	35
Joski, Peter — Kaiser Permanente of Georgia	31
Kaneshige, Hana — Whatcom Community College.....	37
Keefer, Brian — California Department of Mental Health	30
Kemp, Delashawn — California State University, Dominguez Hills	18
Kennedy, Devereaux — Grand Valley State University	8
Kessler, Frank P. — Missouri Western State University	9
Khaja, Khadija — Indiana University	17
Khor, Yoke Lim — Universiti Sains Malaysia	27
Kim, Jong Eun — California State University, Northridge.....	18, 26
Kirtley, Patricia — Independent Scholar.....	11
Kirtley, William — Central Texas College	11

Kitazaki, Michiteru — Toyohashi University of Technology.....	12
Kitchin, William — Loyola University Maryland	9
Knox, Karen S. — Texas State University-San Marcos.....	30
Koga, Nari — Boston College.....	33
Ku, Kyongmo — University of Guam	31
Kuang, Ching Hei — University of Malaya.....	22
Kuo, Mei-Yin — Director of Nursing Department, Chung Jen College of Nursing, Health Sciences and Management.....	24
Kurato, Yoshiya — Fukushima College.....	12
Kurato, Yukiko — Otemon Gakuin University.....	8
Kurusu, Sheri-Lynn — University of Illinois, Urbana Champaign	20
Laanan, Joseph — University of Guam.....	31
Laiprakobsup, Narongpon — Kasetsart University.....	20
Laiprakobsup, Thanapan — University of Houston.....	36
Lambert, Thomas — Indiana University-Southeast	12
Langot, Francois — University of Maine.....	29
Latimore, Carey — Trinity University	23
Lee, Albert — UCLA	22, 35
Lemrova, Sona — Palacky University, Olomouc, Czech Republic	34
Lerma, Michael — Northern Arizona University.....	11, 13
Li, Lin — Cardiff University.....	10
Liao, Shin — National Taiwan Normal University	24
Lin, Li-Feng — Central Taiwan University of Science and Technology.....	24
Lininger, Betty — Glendale Community College	10
Lintag, Rhodora Lynn — University of Santo Tomas	17
Liu, Li-Jen — National Penghu University	34
Liu, Tianlun — Southwestern University of Finance and Economics	16
Liu, Wen-Miaw — RN PHD	13
Lu, Chien-Hsing — MD	34
Luckhurst, Cherie — University of Hawaii at Manoa.....	32
Luscombe, Calvin — University of Hawaii at Hilo	36
Lynch, Scott — Memorial University	19
Lytle, Alan — University of Arkansas at Little Rock.....	15, 33
Maalouf, Haykal — California State University, Dominguez Hills.....	18
Mahaweera, Sahaschai — Sripatum University	34, 35
Majed — King Saud University	39
Martin, Daniel — California State University, Hayward	35
Martinovic, Marietta — RMIT University	8, 16
Mason, Karen — California State University, Dominguez Hills	18
McDonald, Lauren — California State University, Northridge	8
Mei, Ming-Hsin — Central Taiwan University of Science and Technology	34
Melvin, Cathy L — University of North Carolina	31
Meynsse, Joseph — Southern University and A&M College	18, 21
Miller, Frank — Pittsburg State University.....	17
Min, Hokey — Bowling Green State University.....	12
Mohamed Nada, Mona — Education	29
Mondschein, Elissa — San Jose State University	18
Moreno, Alejandro — University of Guanajuato	38

Morgaine, Karen — California State University, Northridge	8
Morgan, Dan — Beaufort County GIS Department.....	13
Muangchuen, Boontun — Sport Authority of Thailand.....	24
Mugol, Myracle — University of Guam	10, 28
Murphy-Erby, Yvette — University of Arkansas.....	15
Myskow, Gordon — Toyo University.....	13
Nakagawa, Rika — Toyo University.....	13
Nakamura, Tsuyako — Doshisha University	22
Napier, Ted — The Ohio State University	22
Nepal, Keshav Raj — Research Consultant	22
Neth, Meicy — University of Guam	31
Ng, Larson — University of Hawaii at Manoa.....	24
Noriega, Antonio E. — Universidad de Guanajuato	29
Olasupo, Fatai — Obafemi Awolowo University	31
Ormsby, Alison — Eckerd College	25
Ortiz, Karen — California State University, Northridge.....	34
Osborne, Theodore — King's University College.....	31
Osman, Intan — Universiti Sains Malaysia	27
Özsoy, Nesrin — Adnan Menderes University	12, 16
Ozturk, Adil Adnan — Asst. Prof. Dr.	12
Padilla, Roberto — University of Toledo.....	23
Page, Aleisha — California State University, Fresno	26
Parnini, Syeda — University of Malaya, Kuala Lumpur	11
Perkins, Patrice — Virginia State University	28
Phalajivin, Chanvit — Sports and Recreation Development Department.....	24
Pladevega, Jillian — University of Guam	31
Poling, Tom — University of Arkansas at Little Rock	32
Pommer, Sieglinde — University of California, Hastings / Vienna University.....	22, 35
Propes, Rebecca — Colorado State University	19
Quintanilla, Melissa — University of Guam.....	28
Quintero-Rojas, Coralia — University of Guanajuato	29
Rahimian, Pantea — California State University, Northridge	34
Rahm, Dianne — Texas State University.....	17
Rainford, Will — Boise State University	15
Rangarajan, Nandhini — Texas State University.....	17
Raskind-Hood, Cheryl — RSPH, Emory University	31
Reddy, Prabhakar — MEPMA, Government of Andhra Pradesh.....	19
Redilla, Janelle — University of Guam.....	31
Regan, Bridget — Emory university	25
Rehan, Vladimir — University Palacky, Philosophical Faculty, Olomouc, Czech Republic	24
Reiterova, Eva — Palacky University, Olomouc, Czech Republic.....	34
Remble, Bobbie — Southern University and A&M College	18, 21
Rempala, Daniel — Keimyung University.....	38
Renfro, Rory — Alta Planning + Design.....	12
Retzlaff, Hazel — Minnesota State University Moorhead.....	27
Rich, Karen — Marywood University.....	35
Rimarova, Kvetoslava — Faculty of Medicine, Kosice, Slovakia	38
Ringstad, Robin — California State University, Stanislaus	39

Rockwell, Richard — University of Denver	21
Rosas, Scott — Concept Systems, Inc.....	37
Rovira-Figueroa, Nahyr — Purdue University.....	39
Safford, Scott — Oregon State University	14
Salas, Cristal — University of Guam	31
Sangpoa, Somsak — Sripatum University	35
Sathyam, Medipally — Osmania University.....	32
Scheidt, Rick — Kansas State University	32
Schwartz, Colleen — Emory University	25
Schwartz, Jonathan — University of Hawaii at West O'ahu	15
Seepersad, Sean — California State University, Fresno	26
Shelton, Beth Anne — University of Texas at Arlington.....	21
Shepperson, Tara — Eastern Kentucky University.....	38
Sheriff, Constance — University of Lethbridge.....	38
Shih, Hui-Hsin — Central Taiwan University of Science and Technology.....	13
Shilton, Adrienne — California Institute of Mental Health	30
Shuib, Rashidah — Universiti Sains Malaysia.....	27
Shy, Jiin-Ju — RN BS	13
Simon, Leo — University of California, Berkeley.....	14
Simons, Ronald — University of Georgia.....	32
Singh, Vipul — Motilal Nehru College (University of Delhi).....	23
Sironi, Emiliano — Università Commerciale Luigi Bocconi.....	27
Sison, Danella — University of Guam	31
Sleeter, Benjamin — USGS	25
Sloan, Lloyd Ren — Howard University	18, 34, 35
Smith, Darron T. — University of Utah.....	20
Smith, William — University of Denver.....	11
Soetikno, Wendie Razif — Keluarga Bunda Foundation.....	25
Sovadinova, Milada — Palacky University, Olomouc, Czech Republic	34
Sroka, Marek — University of Illinois	11
Stauss, Kim — University of Arkansas.....	15
Stephenson, Jeffrey — Case Western Reserve University.....	31
Strait, John — Sam Houston State University.....	24
Sue, Christina — University of Colorado, Boulder.....	35
Suh, Doowon — Korea University.....	22
Sun, Jue — The University of Hong Kong.....	30
Sundararajan, Raji — Purdue University	20
Szabo, Zsuzsanna — Rensselaer Polytechnic Institute	15
Szteinberg, Gabriela — Purdue University	39
Tabri, Edward — University of Texas at Tyler.....	29
Taesillapasathit, Anupong — Sripatum University.....	34
Tanaka, Aiko — Kyoto University.....	12
Taylor, Steven — American University	33
Tellier, Nicole — Chapman University.....	35
Tharawan, Kanokwan — Mahidol University.....	9
Thomas, Cecilia — University of North Texas	20
Toyama, Masao — Chiba Institute of Technology	13
Tran, Xuan — University of West Florida	19

Tzoumis, Kelly — DePaul University	12
Umayam, Jeffrey — University of Guam	28
Underwood, Paul — Otsuma Women's University	13
Usami, Mayumi — Tokyo University of Foreign Studies	12
Van Camp, Debbie — Howard University	18, 35
van Wissen, Leo — University of Groningen	10
Venter, Albert — University of Johannesburg	11
Ventosa-Santaularia, Daniel — Universidad de Guanajuato	19, 29
Vidyasger Reddy, Vancha — N.O. Campus	32
Viotti, Paul — California State University, Chico	21
Vu, Tam — University of Hawaii at Hilo	16, 36
Wahab, Stephanie — Portland State University	39
Wall, Misty — Boise State University	15
Wallace, Candice — Howard University	34
Waller, Sara — Montana State University	31
Walters, David — University of Guelph	36
Wang, Chih Hung — National Changhua University of Education.....	23
Wang, Hanjie — Key Laboratory of Regional Climate-Environment Research for Temperate East Asia (RCE-TEA), C AS.....	25
Wang, Jianglong — Western Washington University.....	19, 30
Weaver, Gabriela — Purdue University	39
Weir, Erin — Purdue University	20
Wen, Ming — University of Utah	8
Whitaker, Elizabeth Ann — Michigan State University	30
Whittington, Marcina — Virginia State University	28
Wieland, Oxana — Univerity of Minnesota - Crookston.....	31
Wilburn, Grady — Howard University	35
Wilson-Rood, Colleen — Michigan State University	28, 30
Woeltz, Joan — Commonwealth Biofuel, LLC	18
Wong, John — Wichita State University	17
Wong, Ngan Ling — University of Malaya	22
Wu, Chia-Jung — Assisstant professor of nursing.....	24
Wu, Shu-Hua — Central Taiwan University of Science and Technology/ Chung Jen College of Nursing, Health Sciences and Management	24
Yang, Chui-Chu — National Taiwan Normal Univerisy	24
Yang, Wei-Chi — Chung Jen College of Nursing, Health Sciences and Management.....	24
Yau, Ming-Jong — National Chiao Tung University	13
Yi, Chang — University of South Carolina.....	13
Ying, Joan — Southern California Permanente Medical Group	10
Ying, Killian — California State University, Los Angeles	10, 27
Young, Karen — Clayton State University	15
Young, Luria — Southern University and A&M College.....	18, 21, 23
Yu, Wen-Wen — Central Taiwan University of Science and Technology/Taichung Count Psychiatric Rehabilitation Unit.....	13
Yuvanont, Prangtip — Sripatum University	34, 35
Zeng, Jinghan — University of Pittsburgh	27, 36
Zhang, Qunying — the University of Hong Kong	33
Zhang, Xingyou — Centers for Disease Control and Prevention	8

Ziolkowska, Jadwiga — University of California, Berkeley 14

Conference Evaluation Form

	Excellent	Good	Fair	Below average	Poor
1. Time of year for conference					
2. Ease of proposal submission process					
3. Ease of conference registration process					
4. Ease of hotel registration process					
5. Timeliness of communication with conference staff					
6. Quality of hotel meeting facilities					
7. Quality of keynote address					
8. Opportunities for networking					
9. Quality of conference meals and breaks					
10. Overall quality of sessions					
11. Overall quality of conference					

12. If you attended Germaine’s Luau how would you rate it: _____

13. How did you find out about the conference? (check all that apply) _____Web search
 _____Word of mouth _____Received e-mail _____Newsletter
 _____Other: _____

14. How likely are you to attend in the future? _____Definitely will _____Probably _____Maybe _____Not likely
 _____Definitely not

15. Would you recommend this conference to colleagues and/or students? _____Yes _____No

15a. Why or why not? _____

16. Other comments or suggestions? _____

Hawaii International Conference on Social Sciences paper review

The 2011 Hawaii International Conference on Social Sciences scheduled for June 1-4, 2011 will be held in Honolulu, Hawaii.

If you are interested in being a volunteer reviewer for the 2011 conference, please use the following form to indicate your preferences.

My contact information

Name: _____ Department: _____

Affiliation: _____ Email: _____

- Anthropology
- Area Studies (African, American, Asian, European, Hispanic, Islamic, Jewish, Middle Eastern, Russian, Women's and all other cultural and ethnic studies)
- Communication
- Economics
- Education
- Energy Alternatives
- Ethnic Studies/International Studies
- Geography
- History
- International Relations
- Journalism
- New Urbanism
- Political Science
- Preservation and Green Urbanism
- Psychology
- Public Administration
- Social Work
- Sociology
- Sustainable Development
- Sustainable Urban Neighborhoods
- Urban and Regional Planning
- Women's Studies

Please return to the registration desk or send to:

Hawaii International Conference on Social Sciences
Reviewing Committee
PO Box 75023
Honolulu, HI 96836
social@hicsocial.org
Fax: 808-947-2420